



## Partnership Plan 2016



Located in  
40+  
Countries  
**22 CHURCH PLANTS A DAY**

Missions Trips Yearly  
25-American Teams  
75-Foreign-Led Teams

**Established Churches**  
Cambodia-200  
Myanmar-500  
Ethiopia-3,000  
Uganda-600  
Peru-400  
Ecuador-300  
India-10,000  
Haiti-150  
Philippines-6000

**New Developments**  
Pakistan  
Sri Lanka  
UAE  
Cuba

**Newly Formed**

Malaysia	Rwanda	Honduras
Indonesia	Congo	El Salvador
Laos	Cameroon	Nicaragua
Vietnam	Liberia	Bolivia
Thailand	Sierra Leone	Columbia
Bangladesh	Gabon	Argentina
Nepal	Nigeria	Panama
Zambia	Venezuela	Dominican Republic
Kenya	Mexico	Puerto Rico

Note: 2007-2015  
28,200 churches

Salvations  
1,379,000 Grand Total  
172,375 yearly  
14,364 monthly  
478 Daily/20 Hourly

2007- 2 churches a day  
2015- 22 churches a day @ \$48 for each church plant

India # include the partnership with E3 Ministry.  
These are estimates.



### CMC International:

Our vision is simple: Organize coalitions of pastoral networks to have a church in every village or neighborhood. We are not a denomination, or a ministry entity working alone. We are a coalition of followers of Christ from numerous church affiliations with a Kingdom-of-God mindset working together, supporting the pastor networks efforts to plant reproducing churches in villages that do not have a church, by the power of the Holy Spirit. We work in countries where God has called local Christ-followers reaching out to the forgotten villages and people in their country with the gospel.

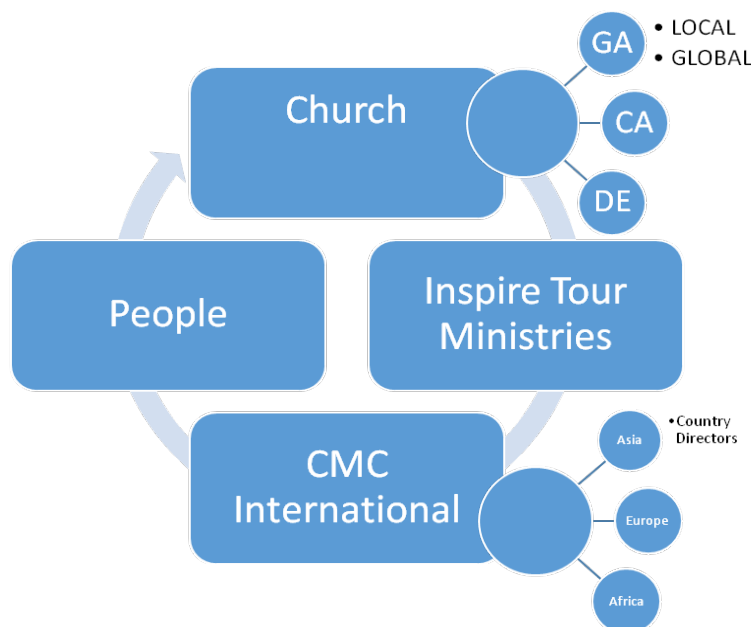
## Turn-key Missions Department

At this moment churches across America are missing a missions department simply because they don't have the funds, resources, experience and time to manage one. There is no need to reinvent the wheel. We at CMC International are a turn-key missions department for churches across America.

CMC International can offer a missions department for every church in America. We have the missions plan in place but are looking for believers to fulfill the Kingdom Calling. This program never competes only complements any existing mission's organizations or program.

The reason why CMC International is such an exceptional mission's model is because they have proven to take \$100 and maximize it to be the value of \$1000's. This includes their running cost and the powerful multiplication model they implemented in over 40 countries worldwide. Just in the past 9 years they have averaged 172,000 salvations a year. In 2015 alone they planted 8,000 churches that cost an average of \$49 a church plant.

What this will do for your church is overwhelming. Your church would have a partnership in outreaches all over the world. Your congregation would be trained and participate to minister on many different contents. They would come back energized, trained, changed and empowered and ready to take the next steps in ministry at home. The excitement will be contagious and will work its way through enveloping the whole church with a new fire and compassion for God and his people. They will never be the same again. Totally life changing!



## **HOW IT WORKS?**

Churches or individuals would adopt a country or outreach and get the opportunity to go or send members on that outreach. They would then receive a report of the results from their partnership along with actual video of the people in action from your church. Our goal is to empower the people in that country and use proven educational resource program that CMC International has developed. This proven multiplication program will change the level of growth and duplication in everyone life that it touches.

This is different from the old model of churches sponsoring a missionary. In the old model a much smaller group is touched over a much longer time period, typically years, with at best one church being planted. In the CMC model last year we planted more than 27 church plants a day. This change in method and management create an infrastructure that the people in that country could depend on to learn about God and their purpose here on earth and will create a grassroots effect with a strong infrastructure to the community of believers.

Upon returning home from the mission's field we can help you set up local outreaches to put to work what has just been learned. This will keep them engaged teaching others what they have learned and growing your church in the process.

### **How do we get involved and partner with CMC**

We have many areas of involvement available to choose from at CMC .

**Mission outreaches** is first and foremost, participating with CMC. Here is where you will benefit the most in giving of your time, learning to share the gospel in a new way, praying for the sick in areas where their only hope is a miracle (we do see so many.. deaf & dumb, lame, cancer and host of diseases healed), sharing your testimony and bring home the fire that comes from such missions.

**Committing to pray** for the outreach and the people involved. We always need many intercessors while we are in the field. This is one of the reasons CMC has had such success. Getting your church, parishioners and friends to catch the vision and heart for the work of the Kingdom.

**Financial** we need funds to launch such outreaches as well as help some who do not have the finances on their own.

**Administrative** as a primarily a volunteer organization we are always in need of solid people who can help us with this aspect of the ministry. We are currently making a very big step to get CMC more visible so others can participate and together we can see the promise of the Kingdom expansion realized.

**Contact Churches** where other churches can contact to become involves as well as the many individuals who are not currently in a church can come to get involved.